

Shipment of the Month:

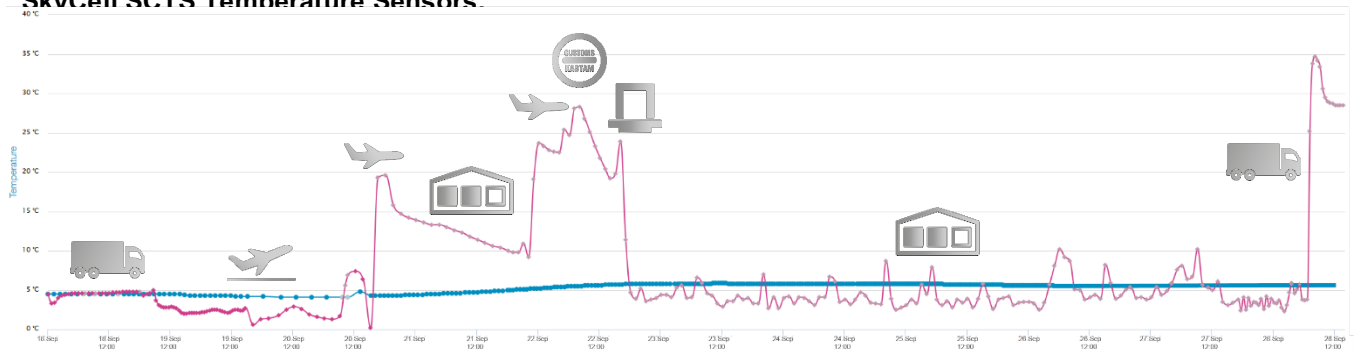
# From Brazil to Singapore



**Product temperature range:** +2°C to +8°C  
**Product type:** Antibiotic for injection  
**Value of goods:** approx. 175,000 USD  
**Weight of goods:** 279kg  
**Container used:** SkyCell 770C  
**Target Time Frame:** 11 Days  
**Challenges:** "Door to door" – extreme and different temperatures at origin / in transit / at destination

- 18.09.2016 – Booking at Sao Paulo
- 19.09.2016 – Container delivered to customer at Sao Paulo
- 20.09.2016 – Customer is loading the container and delivers to the airport
- 21.09.2016 – Departure to Singapore
- 22.09.2016 – Transit Qatar/DOH
- 23.09.2016 – Arrival at Singapore
- 27.09.2016 – Customer unloads the container
- 28.09.2016 – Container is under SkyCell control

**SkyCell SCTS Temperature Sensors:**



**Measured Temperature Inside Container:** +4.5°C to +5.8°C ■  
**Measured Temperature Outside Container:** +0.2°C to +34.7°C ■

For more information, please contact Christoph Schneider:  
 email: [christoph.schneider@skycell.ch](mailto:christoph.schneider@skycell.ch) | phone: +41 44 533 23 11