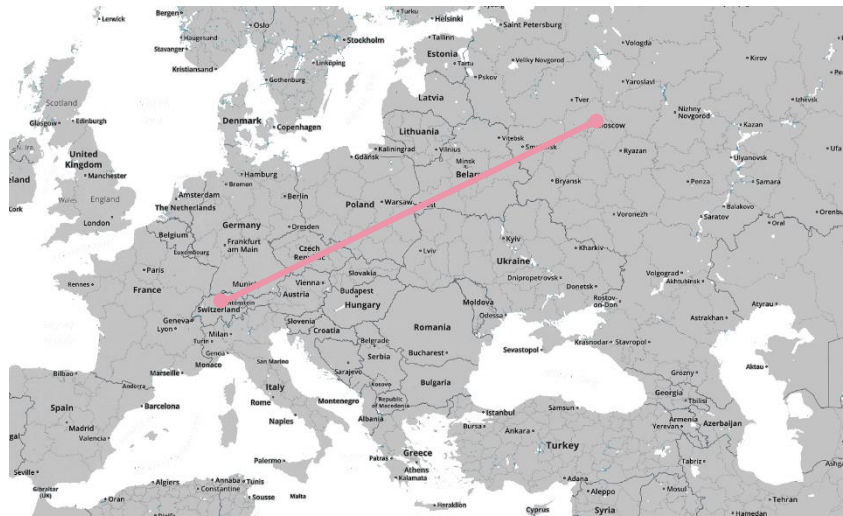


Shipment of the Month:

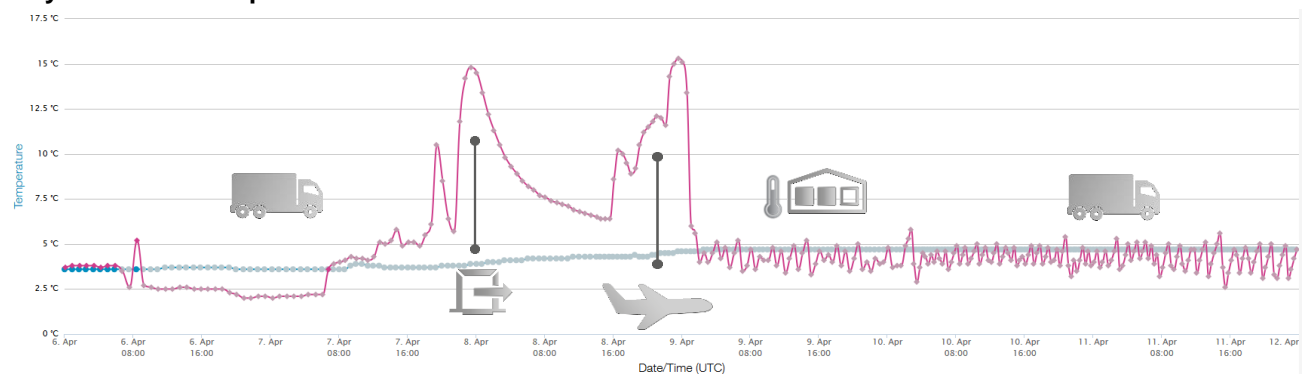
# Switzerland to Russia



- Product temperature range:** +2°C to +8°C
- Product type:** sensitive oncology biopharmaceuticals
- Value of goods:** approx. 120,000 EUR
- Weight of goods:** approx. 6 kg
- Container used:** SkyCell 770 C
- Target Time Frame:** 7 Days
- Challenges:** temperature extremes, administrative challenge, infrastructure limitations

- 07.04.16 – SkyCell delivery to client’s Swiss pharma hub for loading of goods
- 08.04.16 to 09.04.16 – Flight to Russia Airport
- 09.04.16 to 10.04.16 – Cooled warehouse at airport
- 11.04.16 to 12.04.16 – Transport from airport to client
- 12.04.16 – Unloading of goods out of the SkyCell container at Russian consignee warehouse

## SkyCell SCTS Temperature Sensors:



- Measured Temperature Inside Container:** +3.6°C to +4.7°C ■
- Measured Temperature Outside Container:** +2°C to +15.3°C ■

For more information, please contact Bernhard Bärtschi :  
 email: [bernhard.baertschi@skycell.ch](mailto:bernhard.baertschi@skycell.ch) | phone: +41 44 533 23 01